

Lamb Notebook Requirements

9 – 11 YEARS OLD

- *4 Photos (2 with exhibitor and lamb)
- *Pick a breed of sheep-tell us about that breed-at least two paragraphs.
- *What is the breed that you picked known for (examples: meat, wool)
- *Feed Records.
- *How did you decide to do a sheep project, and what did you have to do in order to get ready for your project?
- * List 3 things you need to do to your lamb on show day.
- *On the diagram provided, label all the parts of the lamb.

12 – 13 YEARS OLD

- *4 Photos (2 with exhibitor and lamb)
- *Pick a breed of sheep-tell us about that breed-at least two paragraphs.
- *What is the breed that you picked known for (examples: meat, wool)
- *How long is the gestation period of a ewe?
- *Feed Records.
- *List 3 things you need to do to your lamb on show day.
- *How did you decide to do a sheep project, and what did you have to do in order to get ready for your project from start to finish?
- *A copy of your buyer's letter and a list of at least 5 buyers that the letter had been sent.
- *Small journal with at least one entry a week and not just that you fed and watered the lamb.
- *Write an essay of your favorite part of the project and your least favorite part. (75 – 125 words). Use complete sentences and correct grammar.
- *On the diagram provided, label all the parts of the lamb.
- *On the diagram provided, label all the wholesale cuts of lamb.

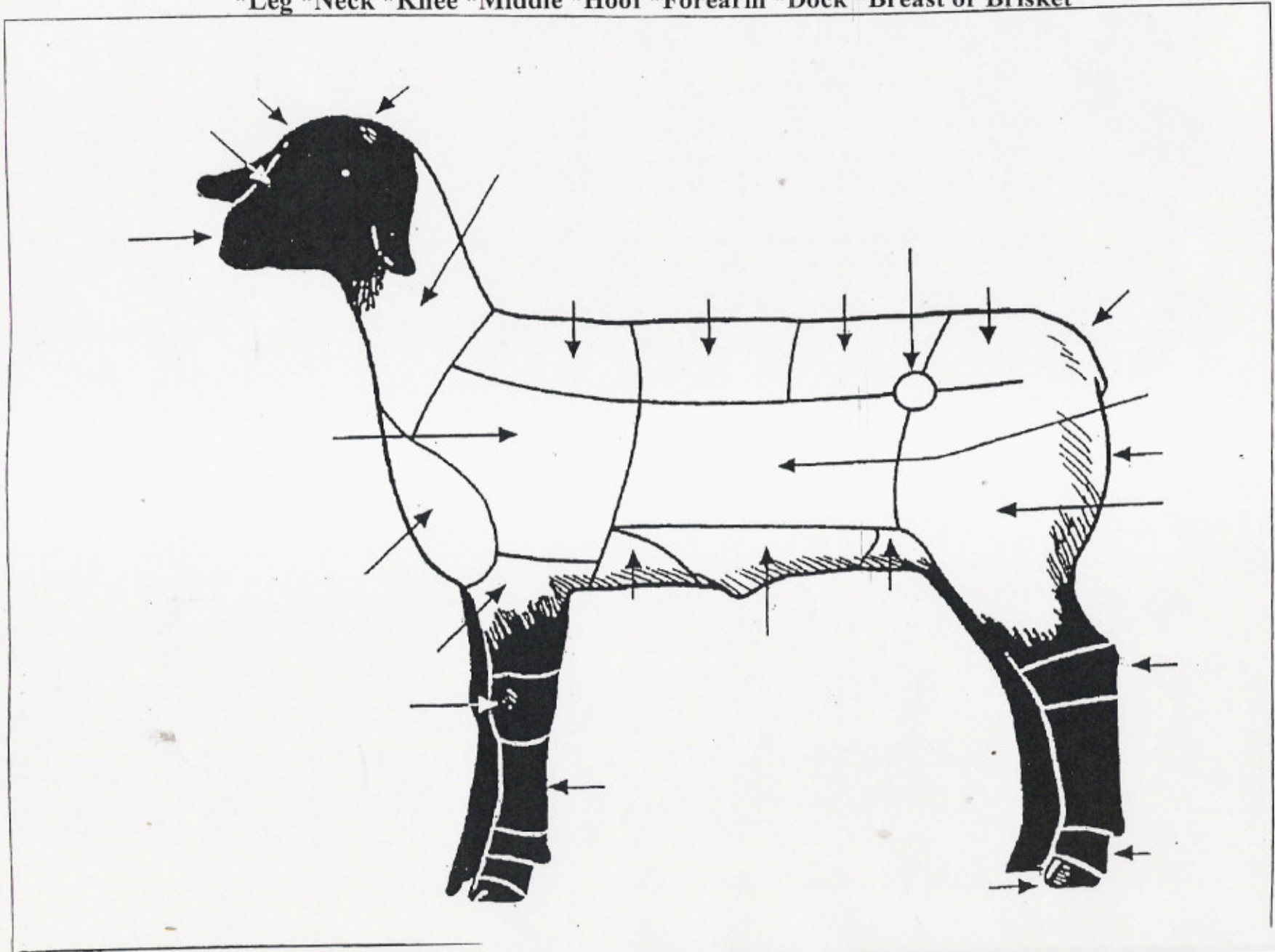
14 and OVER

- *4 Photos (2 with exhibitor and lamb)
- *Describe the characteristics of a desirable market lamb.
- *What is the lamb breed you are showing known for (examples: meat, wool).
- *Feed Records
- *How did you decide to do a sheep project, and what did you have to do in order to get ready for you project from start to finish?
- *List 3 things you need to do to your lamb on show day.
- *A copy of your buyer's letter and a list of at least 5 buyers that the letter had been sent.
- *Small journal with at least one entry a week and not just that you fed and watered the sheep.
- *How has the economy affected your lamb project this year? Explain!
- *Write an essay of why the breed you are showing is superior to two other breeds of sheep and why you think so, at least 200 – 250 words. Use complete sentences and correct grammar.
- *On the diagram provided, label all the parts of the lamb.
- *On the diagram provided, label all the wholesale cuts of lamb.
- *On the diagram provided, label all the parts of the digestive tract.

****A paragraph equals 4 sentences****

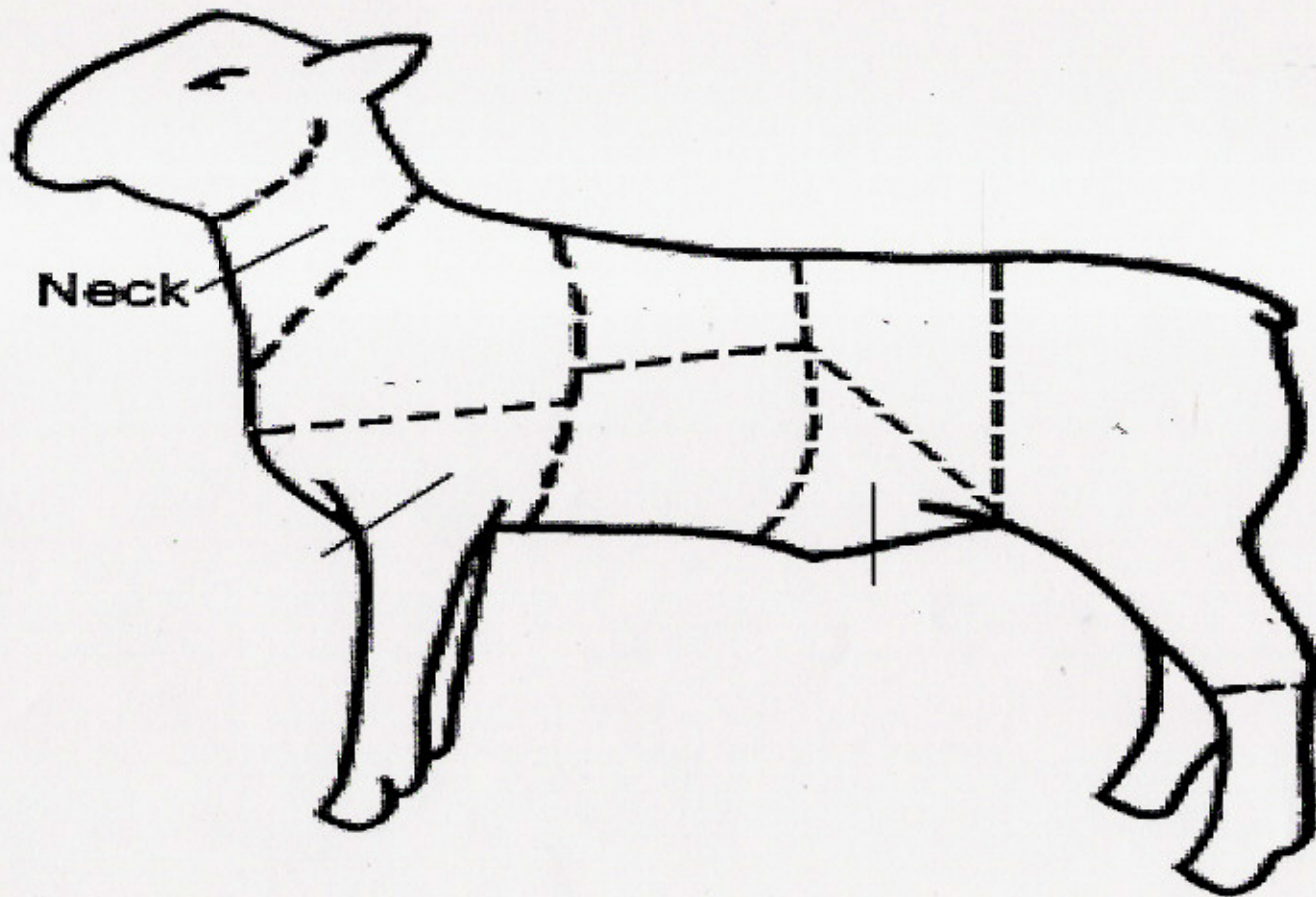
Word Bank For Lamb Diagram

*Shoulder *Rump *Top of Shoulder *Muzzle *Cannon *Forehead *Pastern *Hock
*Back or Rack *Rear Flank *Face *Twist *Loin *Fore Flank *Poll *Hips *Belly
*Leg *Neck *Knee *Middle *Hoof *Forearm *Dock *Breast or Brisket



Word Bank for Lamb Wholesale Cuts Diagram

Breast, Flank, Foreshank, Leg, Loin, Rack and Shoulder



Word Bank for the Digestive System of the Lamb

Abomasum, Anus, Esophagus, Cecum, Large Intestine,
Omasum, Reticulum, Rumens, Small Intestine

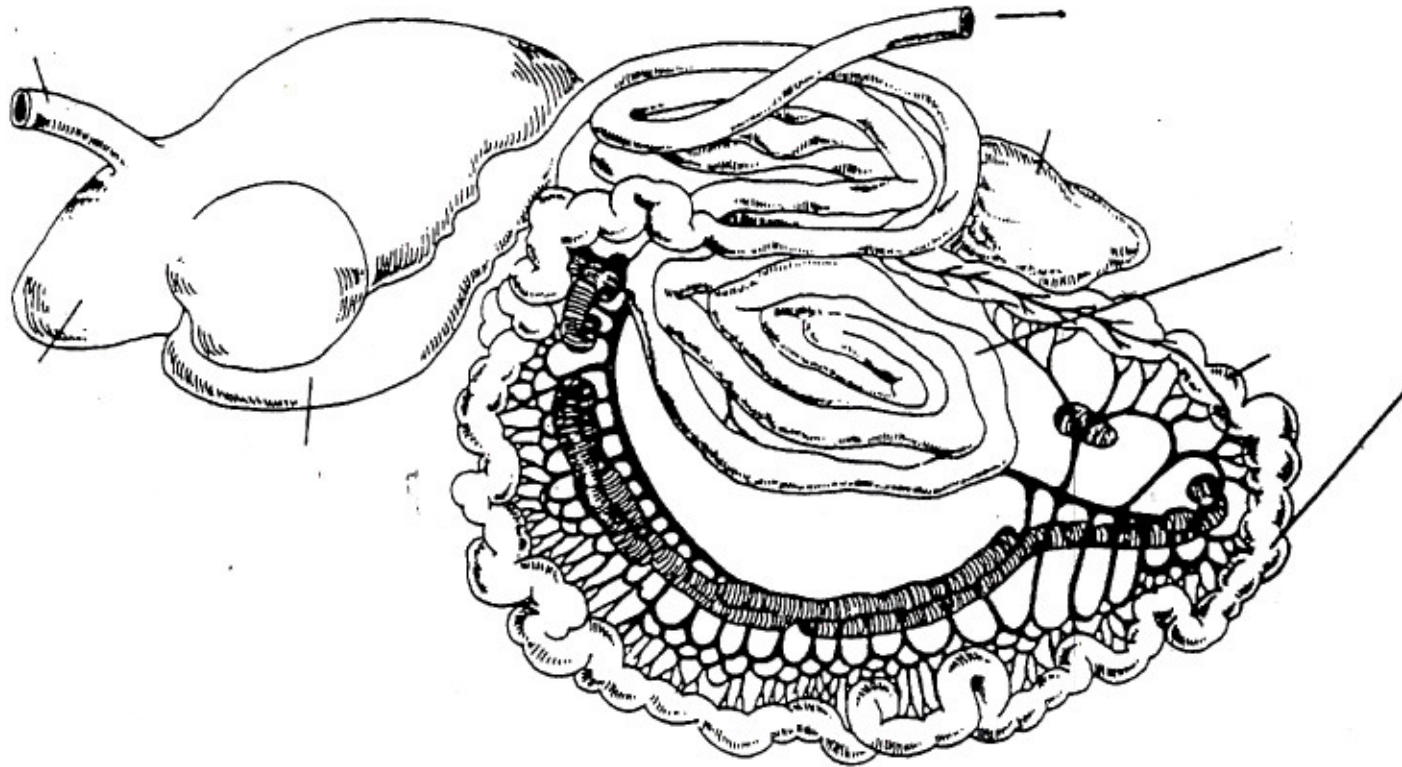


Figure 57
Essential Parts of a Ruminant Digestive System